



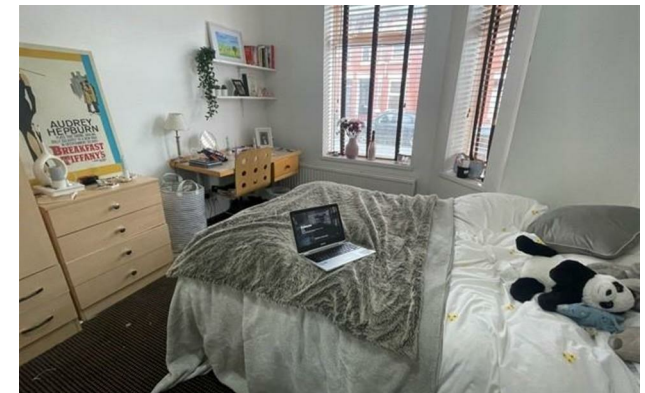
jordan fishwick

FALLOWFIELD
Standish Road



Standish Road, Fallowfield, M14 6NP

£3,588 Per Calendar Month



The Property

*** AVAILABLE 1st SEPTEMBER 2026 *** £138.00 PPPW *** BILLS PACKAGE AVAILABLE *** A superbly located and spacious four double bedroom student property available for the academic year 2026/27. This property is situated in the heart of Fallowfield centre a stones throw from Sainsbury's and Wilmslow Road bus routes. In the brief, the property compromises; entrance hall, stylishly presented kitchen including all appliances, generous lounge with TV, four double bedrooms, two shower rooms and two WCs. Fully Furnished. To view please contact our Didsbury office.

EPC Rating - D // Council Tax Band B

Directions

M14 6NP



- Available September 2026
- £138.00 PPPW
- Four Week Deposit
- Six Bedrooms
- Two Shower Rooms
- Fully Furnished
- Great Location
- Bills Package Available
- Council Tax Band B
- EPC Rating D

Postcode - M14 6NP

EPC Rating - D

Floor Area - sq ft

Local Authority - Manchester

Council Tax - B





These particulars are believed to be accurate but they are not guaranteed and do not form a contract. Neither Jordan Fishwick nor the vendor or lessor accept any responsibility in respect of these particulars, which are not intended to be statements or representations of fact and any intending purchaser or lessee must satisfy himself by inspection or otherwise as to the correctness of each of the statements contained in these particulars. Any floorplans on this brochure are for illustrative purposes only and are not necessarily to scale.

Offices also at: Wilmslow, Macclesfield, Hale, Sale, Chorlton, Glossop, Manchester & Salford

757-759 Wilmslow Road, Didsbury Village, Manchester

0161 445 4480

didsbury@jordanfishwick.co.uk
www.jordanfishwick.co.uk